

# CESAB S200 0.8 - 2.0 tonne

Powered Stacker Trucks



Truck Specifications



## CESAB S210 - S214 Truck Specifications

CHARACTERISTICS						
1.1	Manufacturer		CESAB	CESAB	CESAB	
1.2	Model		S210	S212	S214	
1.3	Drive		Electric	Electric	Electric	
1.4	Operator type		Pedestrian	Pedestrian	Pedestrian	
1.5	Load capacity/rated load	Q	[kg]	1000	1200	1400
1.6	Load centre	c	[mm]	600	600	600
1.8	Load distance, centre of support arm wheel to face of forks	x	[mm]	657	639	639
1.9	Wheelbase	y	[mm]	1190	1247	1247
WEIGHT						
2.1	Service weight including battery		[kg]	808	929	929
2.2	Axle load, with load, drive/castor/support arm wheel		[kg]	350/280/1185	400/290/1445	450/245/1640
2.3	Axle load, without load, drive/castor/support arm wheel		[kg]	350/230/235	400/250/285	450/200/285
WHEELS						
3.1	Drive/castor/fork wheel			Friction/Vulkollan/Vulkollan *)		
3.2	Wheel size, front		[mm]	Ø230x70	Ø230x70	Ø230x70
3.3	Wheel size, rear		[mm]	Ø85x95	Ø85x95	Ø85x95
3.4	Additional wheels (dimensions)		[mm]	Ø125x50	Ø125x50	Ø125x50
3.5	Wheels, number front/rear (x=driven wheels)			1x+2/2	1x+2/2	1x+2/2
3.6	Track width, front	b <sub>10</sub>	[mm]	550	550	550
3.7	Track width, rear	b <sub>11</sub>	[mm]	390	390	390
DIMENSIONS						
4.2	Height, mast lowered	h <sub>1</sub>	[mm]	2151 *)	2135 *)	2160 *)
4.3	Free lift	h <sub>2</sub>	[mm]	166 *)	166 *)	166 *)
4.4	Lift	h <sub>3</sub>	[mm]	3210 *)	3210 *)	3165 *)
	Lift height	h <sub>23</sub>	[mm]	3300 *)	3300 *)	3255 *)
4.5	Height, mast extended	h <sub>4</sub>	[mm]	3720 *)	3720 *)	3725 *)
4.8	Stand height (optional platform)	h <sub>7</sub>	[mm]	150	150	150
4.9	Height of tiller in drive position, min./max.	h <sub>14</sub>	[mm]	865/1235	865/1235	865/1235
4.15	Height, fork lowered	h <sub>13</sub>	[mm]	90	90	90
4.19	Overall length	l <sub>1</sub>	[mm]	1833	1908	1908
4.20	Length to face of forks	l <sub>2</sub>	[mm]	683	758	758
4.21	Overall width	b <sub>1</sub>	[mm]	770	770	770 *)
4.22	Fork dimensions	s/e/l	[mm]	60/180/1150 *)	60/180/1150 *)	70/180/1150 *)
4.24	Fork-carriage width	b <sub>3</sub>	[mm]	674	674	674
4.25	Width over forks	b <sub>5</sub>	[mm]	570 *)	570 *)	570 *)
4.31	Ground clearance, with load, below mast	m <sub>1</sub>	[mm]	27	27	27
4.32	Ground clearance, centre of wheelbase	m <sub>2</sub>	[mm]	27	27	27
4.33	Aisle width for pallets 1000x1200 crossways	A <sub>st</sub>	[mm]	2231	2297	2297
4.34	Aisle width for pallets 800x1200 lengthways	A <sub>st</sub>	[mm]	2214	2286	2286
4.35	Turning radius	W <sub>a</sub>	[mm]	1340	1397	1397
PERFORMANCE DATA						
5.1	Travel speed, with/without load		[km/h]	6/6	6/6	6/6
5.2	Lift speed, with/without load		[m/s]	0.14/0.28	0.12/0.28	0.11/0.28
5.3	Lowering speed, with/without load		[m/s]	0.38/0.38	0.38/0.38	0.37/0.38
5.8	Max. gradeability, with/without load		[%]	8/12 <sup>1)</sup>	8/12 <sup>1)</sup>	8/12 <sup>1)</sup>
5.10	Service brake			Electromagnetic	Electromagnetic	Electromagnetic
ELECTRIC MOTOR						
6.1	Drive motor rating S2 60 min		[kW]	1.0	1.0	1.5
6.2	Lift motor rating at S3 15%		[kW]	2.2 <sup>2)</sup>	2.2 <sup>2)</sup>	2.2 <sup>2)</sup>
6.4	Battery voltage/nominal capacity K <sub>6</sub>		[V/Ah]	24/150 <sup>3)</sup>	24/225 <sup>3)</sup>	24/225 <sup>3)</sup>
6.5	Battery weight		[kg]	163 <sup>3)</sup>	219 <sup>3)</sup>	219 <sup>3)</sup>
OTHERS						
8.1	Type of drive control			CESAB Drive Control	CESAB Drive Control	CESAB Drive Control

<sup>1)</sup> Measured according to company standard

<sup>2)</sup> S3 6%

<sup>3)</sup> Further alternatives are available and will produce other values.

Data is based on standard configurations: Small battery compartment (S210), medium battery compartment (S212 & S214)

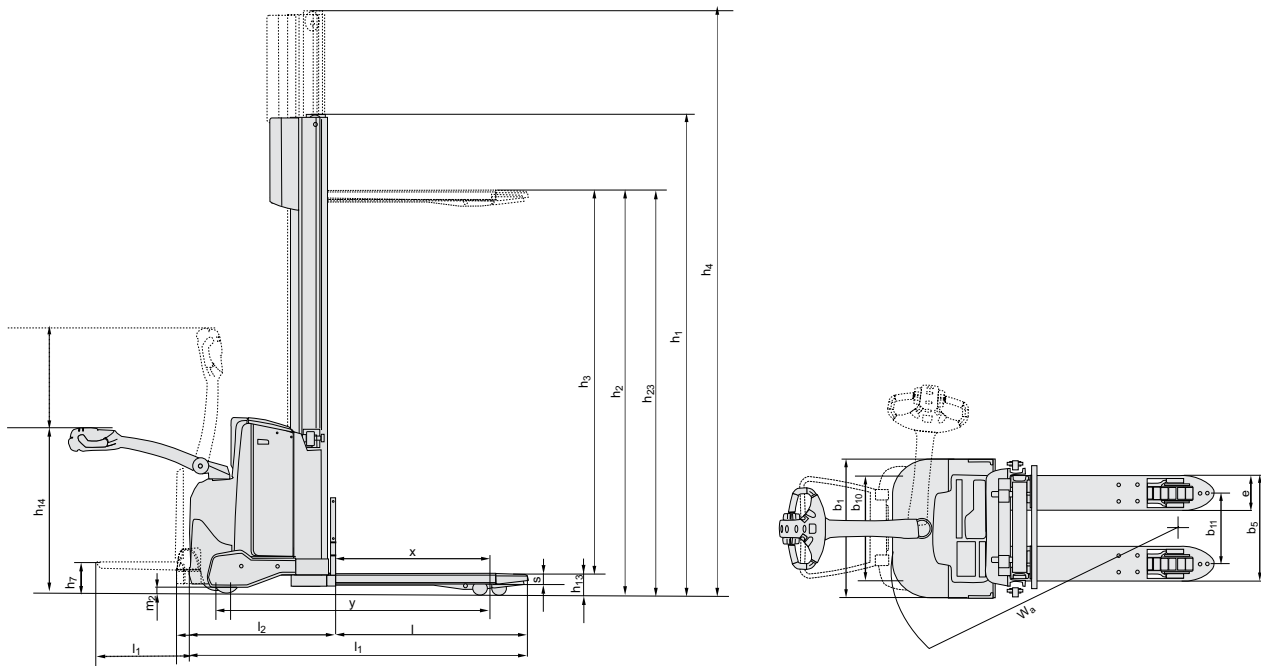
h<sub>23</sub> = 3300 mm Duplex Tele mast (S210), h<sub>23</sub> = 3300 mm Duplex Tele open view mast (S212), h<sub>23</sub> = 3255 mm Duplex Tele open view mast (S214)

Truck performance and dimensions are nominal and subject to tolerances.

Products and specifications are subject to change without notice.



## CESAB S210 - S214 Dimensional Drawings



## Battery compartments

		S210			S212			S214		
Battery change		Lift out	Lift out	Lift out	Lift out	Lift out	Sideways	Lift out	Lift out	Sideways
Battery compartment		Small	Medium	Large	Medium	Large	Large	Medium	Large	Large
1.9	Wheelbase	y [mm]	1190	1247	1297	1247	1297	1297	1247	1297
4.19	Overall length	without platform platform up/down	l <sub>1</sub> [mm] l <sub>1</sub> [mm]	1833 1918/2308	1890 1975/2365	1938 2023/2413	1908 1993/2383	1958 2043/2443	1958 2043/2443	1958 2043/2443
4.20	Length to face of forks	without platform platform up/down	l <sub>2</sub> [mm] l <sub>2</sub> [mm]	683 768/1158	740 825/1215	790 875/1265	758 843/1233	808 893/1283	808 893/1283	808 893/1283
4.33	Aisle width for pallets 1000x1200 crossways	without platform platform up/down	A <sub>st</sub> [mm] A <sub>st</sub> [mm]	2231 2316/2716	2288 2373/2773	2338 2423/2823	2297 2382/2782	2347 2432/2832	2347 2382/2782	2347 2432/2832
4.34	Aisle width for pallets 800x1200 lengthways	without platform platform up/down	A <sub>st</sub> [mm] A <sub>st</sub> [mm]	2214 2299/2699	2271 2356/2756	2321 2406/2806	2286 2371/2771	2336 2421/2821	2286 2371/2771	2336 2421/2821
4.35	Turning radius	without platform platform up/down	W <sub>a</sub> [mm] W <sub>a</sub> [mm]	1340 1425/1825	1397 1482/1882	1447 1532/1932	1397 1482/1882	1447 1532/1932	1447 1532/1932	1397 1482/1882
6.4	Battery voltage, nominal capacity K <sub>s</sub>	[V/ Ah]	24/150	24/225	24/300	24/225	24/300	24/260	24/225	24/300
6.5	Battery weight, min.-max.	[kg]	120-165	189-250	230-280	189-250	230-280	209-205	189-250	230-280

## Mast Specifications

S210		Simplex		Duplex Tele				Duplex Tele Open View			
h <sub>23</sub>	Lift height (h <sub>13</sub> +h <sub>3</sub> )	[mm]	1400	1700	2700	2900	3300	2700	2900	3300	
h <sub>3</sub>	Lift	[mm]	1310	1610	2610	2810	3210	2610	2810	3210	
h <sub>1</sub>	Height, mast lowered	[mm]	1825	2125	1851	1951	2151	1835	1935	2135	
h <sub>2</sub>	Free lift, ground to top of forks	[mm]	1400	1700	166	166	166	166	166	166	
h <sub>4</sub>	Height, mast extended	[mm]	1825	2125	3125	3325	3725	3120	3320	3720	

S212		Simplex		Duplex Tele				Duplex Tele Open View				Duplex Freelif				Triplex Freelif			
h <sub>23</sub>	Lift height (h <sub>13</sub> +h <sub>3</sub> )	[mm]	1400	1700	2700	2900	3300	3700	4150	2700	2900	3300	3700	4150	3300	3700	4150	4500	
h <sub>3</sub>	Lift	[mm]	1310	1610	2610	2810	3210	3610	4060	2610	2810	3210	3610	4060	3210	3610	4060	4410	
h <sub>1</sub>	Height, mast lowered	[mm]	1825	2125	1840	1940	2140	2340	2565	1835	1935	2135	2335	2560	1835	1935	2135	2335	2560
h <sub>2</sub>	Free lift, ground to top of forks	[mm]	1400	1700	166	166	166	166	166	166	166	166	166	1420	1520	1720	1920	2144	1270
h <sub>4</sub>	Height, mast extended	[mm]	1825	2125	3125	3325	3725	4125	4575	3120	3320	3720	4120	4570	3141	3341	3741	4141	4591

S214		Duplex Tele Open View				Duplex Freelif				Triplex Freelif							
h <sub>23</sub>	Lift height (h <sub>13</sub> +h <sub>3</sub> )	[mm]	2655	2855	3255	3655	4105	2655	2855	3255	3655	4105	3255	3655	4105	4455	4755
h <sub>3</sub>	Lift	[mm]	2565	2765	3165	3565	4015	2565	2765	3165	3565	4015	3165	3565	4015	4365	4665
h <sub>1</sub>	Height, mast lowered	[mm]	1860	1960	2160	2360	2585	1835	1935	2135	2335	2560	1695	1829	1979	2095	2195
h <sub>2</sub>	Free lift, ground to top of forks	[mm]	166	166	166	166	166	1374	1474	1674	1874	2099	1224	1358	1508	1624	1724
h <sub>4</sub>	Height, mast extended	[mm]	3125	3325	3725	4125	4575	3141	3341	3741	4141	4591	3747	4149	4599	4947	5247

## CESAB S208L Truck Specifications

CHARACTERISTICS			Elevating support arms
1.1	Manufacturer		CESAB
1.2	Model		S208L
1.3	Drive		Electric
1.4	Operator type		Pedestrian
1.5	Load capacity/rated load	Q [kg]	800
	Support arm capacity/fork and support arm capacity	Q [kg]	2000/-
1.6	Load centre	c [mm]	600
1.8	Load distance, centre of support arm wheel to face of forks	x [mm]	874
1.9	Wheelbase	y [mm]	1293
WEIGHT			
2.1	Service weight including battery	[kg]	679
2.2	Axle load, with load, drive/castor/support arm wheel	[kg]	525/150/830
2.3	Axle load, without load, drive/castor/support arm wheel	[kg]	375/150/180
WHEELS			
3.1	Drive/castor/fork wheel		Friction/Vulkollan/Vulkollan *)
3.2	Wheel size, front	[mm]	Ø230x70
3.3	Wheel size, rear	[mm]	Ø85x74
3.4	Additional wheels (dimensions)	[mm]	Ø125x50
3.5	Wheels, number front/rear (x=driven wheels)		1x+2/4
3.6	Track width, front	b <sub>10</sub> [mm]	430
3.7	Track width, rear	b <sub>11</sub> [mm]	390
DIMENSIONS			
4.2	Height, mast lowered	h <sub>1</sub> [mm]	1863 *)
4.3	Free lift	h <sub>2</sub> [mm]	1580 *)
4.4	Lift	h <sub>3</sub> [mm]	1490 *)
	Lift height	h <sub>23</sub> [mm]	1580 *)
4.5	Height, mast extended	h <sub>4</sub> [mm]	1863 *)
4.9	Height of tiller in drive position, min./max.	h <sub>14</sub> [mm]	865/1235
4.15	Height, fork lowered	h <sub>13</sub> [mm]	90
4.19	Overall length	l <sub>1</sub> [mm]	1777
4.20	Length to face of forks	l <sub>2</sub> [mm]	628
4.21	Overall width	b <sub>1</sub> [mm]	726
4.22	Fork dimensions	s/e/l [mm]	60/180/1150 *)
4.24	Fork-carriage width	b <sub>3</sub> [mm]	674
4.25	Width over forks	b <sub>5</sub> [mm]	570 *)
4.31	Ground clearance, with load, below mast	m <sub>1</sub> [mm]	25
4.32	Ground clearance, centre of wheelbase	m <sub>2</sub> [mm]	25
4.33	Aisle width for pallets 1000x1200 crossways	A <sub>st</sub> [mm]	2256
4.34	Aisle width for pallets 800x1200 lengthways	A <sub>st</sub> [mm]	2159
4.35	Turning radius	W <sub>a</sub> [mm]	1443
PERFORMANCE DATA			
5.1	Travel speed, with/without load	[km/h]	6/6
5.2	Lift speed, with/without load	[m/s]	0.14/0.21
5.3	Lowering speed, with/without load	[m/s]	0.29/0.20
5.8	Max. gradeability, with/without load	[%]	9/18 <sup>1)</sup>
5.10	Service brake		Electromagnetic
ELECTRIC MOTOR			
6.1	Drive motor rating S2 60 min	[kW]	1.0
6.2	Lift motor rating at S3 15%	[kW]	2.0 <sup>2)</sup>
6.4	Battery voltage/nominal capacity K <sub>s</sub>	[V/Ah]	2x12/180 <sup>3)</sup>
6.5	Battery weight	[kg]	2x109 <sup>3)</sup>
OTHERS			
8.1	Type of drive control		CESAB Drive Control

<sup>1)</sup> Measured according to company standard

<sup>2)</sup> S3 7%

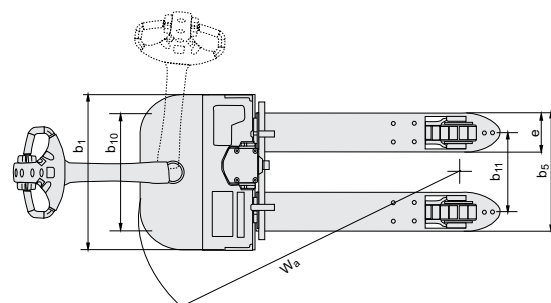
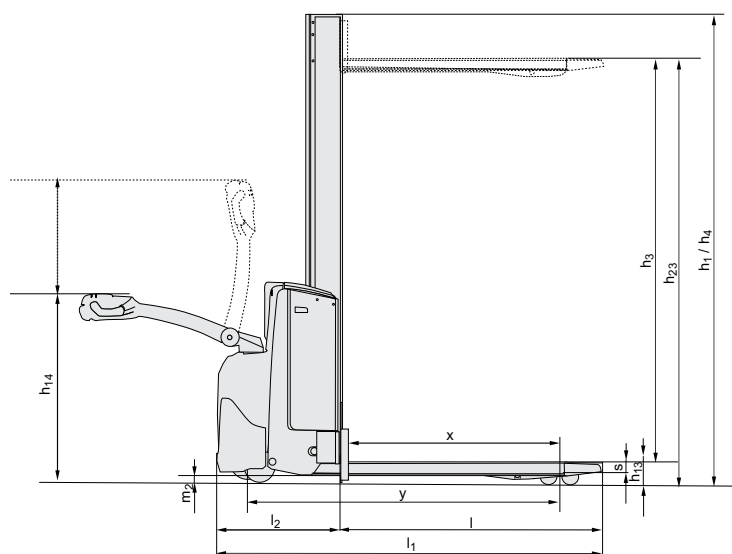
<sup>3)</sup> Further alternatives are available and will produce other values.

Data is based on standard configurations: h<sub>23</sub> = 1580 mm Mono mast

Truck performance and dimensions are nominal and subject to tolerances.  
Products and specifications are subject to change without notice.



## CESAB S208L Dimensional Drawings



### Mast Specifications

S208L			Mono	
$h_{23}$	Lift height ( $h_{13} + h_3$ )	[mm]	600	1580
$h_3$	Lift	[mm]	510	1490
$h_1$	Height, mast lowered	[mm]	908	1863
$h_2$	Free lift, ground to top of forks	[mm]	600	1580
$h_4$	Height, mast extended	[mm]	908	1863

## CESAB S212L - S214L - S220D Truck Specifications

CHARACTERISTICS			Elevating Support Arms	Elevating Support Arms	Double Stacker
1.1	Manufacturer		CESAB	CESAB	CESAB
1.2	Model		S212L	S214L	S220D
1.3	Drive		Electric	Electric	Electric
1.4	Operator type		Pedestrian	Pedestrian	Pedestrian
1.5	Load capacity/rated load	Q [kg]	1200	1400	1000
	Support arm capacity/fork and support arm capacity	Q [kg]	1600/-	2000/-	2000/800+1200
1.6	Load centre	c [mm]	600	600	600
1.8	Load distance, centre of support arm wheel to face of forks	x [mm]	632	632	865
1.9	Wheelbase	y [mm]	1243	1243	1483
WEIGHT					
2.1	Service weight including battery	[kg]	929	929	879
2.2	Axle load, with load, drive/castor/support arm wheel	[kg]	450/340/1345	450/360/1525	570/360/1155
2.3	Axle load, without load, drive/castor/support arm wheel	[kg]	450/220/265	450/220/265	570/100/215
WHEELS					
3.1	Drive/castor/fork wheel		Friction/Vulkollan/Vulkollan *)	Friction/Vulkollan/Vulkollan	Friction/Vulkollan/Vulkollan *)
3.2	Wheel size, front	[mm]	Ø230x70	Ø230x70	Ø230x70
3.3	Wheel size, rear	[mm]	Ø85x74	Ø85x74	Ø85x74
3.4	Additional wheels (dimensions)	[mm]	Ø125x50	Ø125x50	Ø125x50
3.5	Wheels, number front/rear (x=driven wheels)		1x+2/4	1x+2/4	1x2/4
3.6	Track width, front	b <sub>10</sub> [mm]	550	550	550
3.7	Track width, rear	b <sub>11</sub> [mm]	390	390	390
DIMENSIONS					
4.2	Height, mast lowered	h <sub>1</sub> [mm]	2135 *)	2160 *)	1535 *)
4.3	Free lift	h <sub>2</sub> [mm]	166 *)	166 *)	166 *)
4.4	Lift	h <sub>3</sub> [mm]	3210 *)	3165 *)	2010 *)
	Lift height	h <sub>23</sub> [mm]	3300 *)	3255 *)	2100 *)
4.5	Height, mast extended	h <sub>4</sub> [mm]	3740 *)	3725 *)	2520 *)
4.6	Initial lift	h <sub>5</sub> [mm]	120	120	120
4.8	Stand height (optional platform)	h <sub>7</sub> [mm]	150	150	150
4.9	Height of tiller in drive position, min./max.	h <sub>14</sub> [mm]	865/1235	865/1235	865/1235
4.15	Height, fork lowered	h <sub>13</sub> [mm]	90	90	90
4.19	Overall length	l <sub>1</sub> [mm]	1911	1911	1910
4.20	Length to face of forks	l <sub>2</sub> [mm]	761	761	760
4.21	Overall width	b <sub>1</sub> /b <sub>2</sub> [mm]	770	770 *)	770
4.22	Fork dimensions	s/e/l [mm]	60/180/1150 *)	70/180/1150 *)	60/180/1150 *)
4.24	Fork-carriage width	b <sub>3</sub> [mm]	674	674	674
4.25	Width over forks	b <sub>5</sub> [mm]	570 *)	570 *)	570 *)
4.31	Ground clearance, with load, below mast	m <sub>1</sub> [mm]	22	22	22
4.32	Ground clearance, centre of wheelbase	m <sub>2</sub> [mm]	22	22	22
4.33	Aisle width for pallets 1000x1200 crossways	A <sub>st</sub> [mm]	2297	2297	2448
4.34	Aisle width for pallets 800x1200 lengthways	A <sub>st</sub> [mm]	2288	2288	2355
4.35	Turning radius	W <sub>a</sub> [mm]	1393	1393	1633
PERFORMANCE DATA					
5.1	Travel speed, with/without load	[km/h]	6/6	6/6	6/6
5.2	Lift speed, with/without load	[m/s]	0.12/0.27	0.11/0.27	0.14/0.27
5.3	Lowering speed, with/without load	[m/s]	0.38/0.32	0.37/0.32	0.38/0.32
5.8	Max. gradeability, with/without load	[%]	9/12 <sup>1)</sup>	8/12 <sup>1)</sup>	8/12 <sup>1)</sup>
5.10	Service brake		Electromagnetic	Electromagnetic	Electromagnetic
ELECTRIC MOTOR					
6.1	Drive motor rating S2 60 min	[kW]	1.5	1.5	1.5
6.2	Lift motor rating at S3 15%	[kW]	2.2 <sup>2)</sup>	2.2 <sup>2)</sup>	2.2 <sup>2)</sup>
6.4	Battery voltage/nominal capacity K <sub>5</sub>	[V/Ah]	24/225 *)	24/225 *)	24/225 *)
6.5	Battery weight	[kg]	219 *)	219 *)	219 *)
OTHERS					
8.1	Type of drive control		CESAB Drive Control	CESAB Drive Control	CESAB Drive Control

<sup>1)</sup> Measured according to company standard

<sup>2)</sup> S3 6%

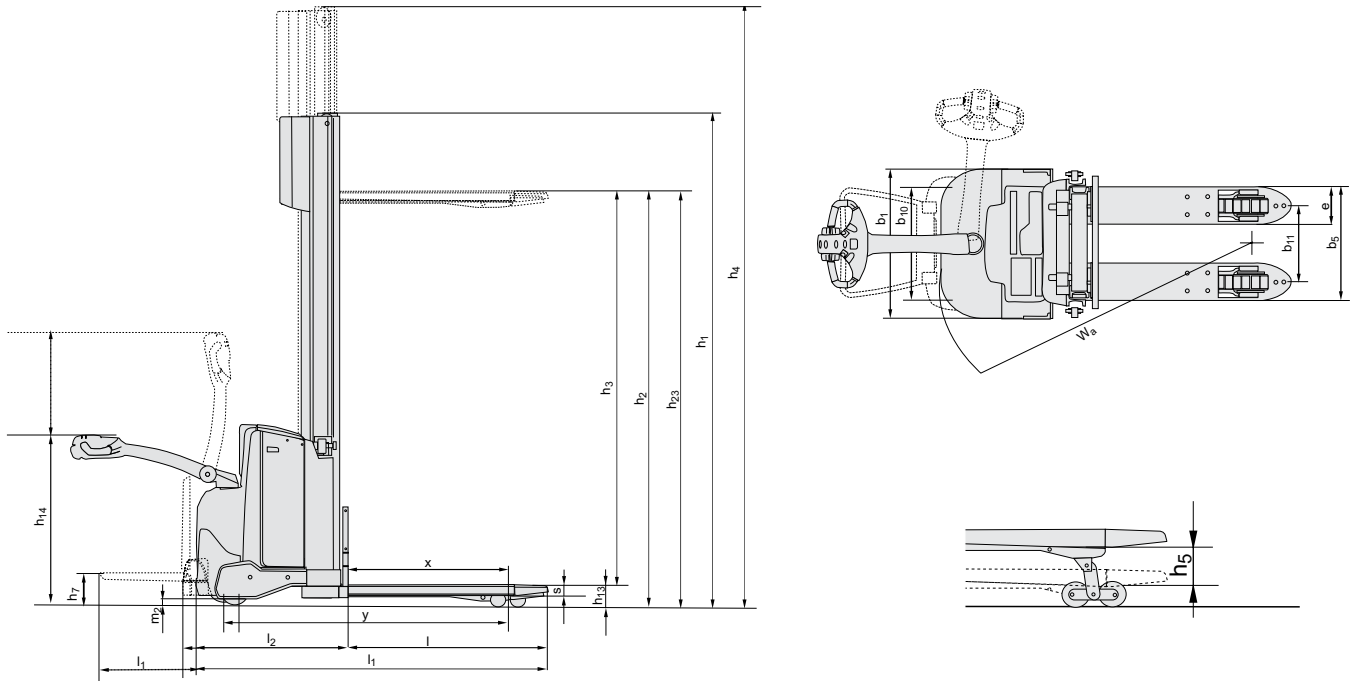
<sup>3)</sup> Further alternatives are available and will produce other values.

Data is based on standard configurations: medium battery compartment, h<sub>23</sub> = 3300 mm (S212L), 3255 mm (S214L) and 2100 mm (S220D) Duplex Tele Open View mast.

Truck performance and dimensions are nominal and subject to tolerances. Products and specifications are subject to change without notice.



## CESAB S212L - S214L - S220D Dimensional Drawings



### Battery compartments

			S212L			S214L			S220D			
Battery change			Lift out	Lift out	Sideways	Lift out	Lift out	Sideways	Lift out	Lift out	Sideways	
Battery compartment			Medium	Large	Large	Medium	Large	Large	Medium	Large	Large	
1.9	Wheelbase	y [mm]	1243	1293	1293	1243	1293	1293	1483	1533	1533	
4.19	Overall length	without platform	l <sub>1</sub> [mm]	1911	1961	1961	1911	1961	1961	1910	1960	1960
		platform up/down	l <sub>1</sub> [mm]	1996/2386	2046/2436	2046/2436	1996/2386	2046/2436	2046/2436	1995/2385	2045/2435	2045/2435
4.20	Length to face of forks	without platform	l <sub>2</sub> [mm]	761	811	811	761	811	811	760	810	810
		platform up/down	l <sub>2</sub> [mm]	846/1236	896/1286	896/1286	846/1236	896/1286	896/1286	845/1235	895/1285	895/1285
4.33	Aisle width for pallets 1000x1200 crossways	without platform	A <sub>st</sub> [mm]	2297	2347	2347	2297	2347	2347	2448	2498	2498
		platform up/down	A <sub>st</sub> [mm]	2382/2782	2432/2832	2432/2832	2382/2782	2432/2832	2432/2832	2533/2933	2583/2983	2586/2983
4.34	Aisle width for pallets 800x1200 lengthways	without platform	A <sub>st</sub> [mm]	2288	2338	2338	2288	2338	2338	2355	2405	2405
		platform up/down	A <sub>st</sub> [mm]	2373/2773	2423/2823	2423/2823	2373/2773	2423/2823	2423/2823	2440/2840	2490/2890	2490/2890
4.35	Turning radius	without platform	W <sub>a</sub> [mm]	1393	1443	1443	1393	1443	1443	1633	1683	1683
		platform up/down	W <sub>a</sub> [mm]	1478/1878	1528/1928	1528/1928	1478/1878	1528/1928	1528/1928	1718/2118	1768/2168	1768/2168
6.4	Battery voltage, nominal capacity K <sub>5</sub>	[V/Ah]	24/225	24/300	24/260	24/225	24/300	24/260	24/225	24/300	24/260	
6.5	Battery weight, min.-max.	[kg]	189-250	230-280	209-250	189-250	230-280	209-250	189-250	230-280	209-250	

### Mast Specifications

S212L		Simplex	Duplex Tele				Duplex Tele Open View				Duplex Freelift				Triplex Freelift								
h <sub>23</sub>	Lift height (h <sub>13</sub> +h <sub>3</sub> )	[mm]	1400	1700	2700	2900	3300	3700	4150	2700	2900	3300	3700	4150	3300	3700	4150	4500					
h <sub>3</sub>	Lift	[mm]	1310	1610	2610	2810	3210	3610	4060	2610	2810	3210	3610	4060	3210	3610	4060	4410					
h <sub>1</sub>	Height, mast lowered	[mm]	1825	2125	1840	1940	2140	2340	2565	1835	1935	2135	2335	2560	1835	1935	2135	2335	2560				
h <sub>2</sub>	Free lift, ground to top of forks	[mm]	1400	1700	166	166	166	166	166	166	166	166	166	1420	1520	1720	1920	2144	1270	1404	1554	1670	
h <sub>4</sub>	Height, mast extended	[mm]	1825	2125	3125	3325	3725	4125	4575	3120	3320	3720	4120	4570	3341	3341	3741	4141	4591	3747	4149	4599	4947

S214L		Duplex Tele Open View	Duplex Freelift				Triplex Freelift										
h <sub>23</sub>	Lift height (h <sub>13</sub> +h <sub>3</sub> )	[mm]	2655	2855	3255	3655	4105	2655	2855	3255	3655	4105	3255	3655	4105	4455	4755
h <sub>3</sub>	Lift	[mm]	2565	2765	3165	3565	4015	2565	2765	3165	3565	4015	3165	3565	4015	4365	4665
h <sub>1</sub>	Height, mast lowered	[mm]	1860	1960	2160	2360	2585	1835	1935	2135	2335	2560	1695	1829	1979	2095	2195
h <sub>2</sub>	Free lift, ground to top of forks	[mm]	166	166	166	166	166	1374	1474	1674	1874	2099	1224	1358	1508	1624	1724
h <sub>4</sub>	Height, mast extended	[mm]	3125	3325	3725	4125	4575	3141	3341	3741	4141	4591	3747	4149	4599	4947	5247

S220D		Duplex Tele	Duplex Tele Open View		
h <sub>23</sub>	Lift height (h <sub>13</sub> +h <sub>3</sub> )	[mm]	1700	1900	2100
h <sub>3</sub>	Lift	[mm]	1610	1810	2010
h <sub>1</sub>	Height, mast lowered	[mm]	1340	1440	1540
h <sub>2</sub>	Free lift, ground to top of forks	[mm]	166	166	166
h <sub>4</sub>	Height, mast extended	[mm]	2125	2325	2525

## CESAB S212S Truck Specifications

CHARACTERISTICS				Straddle Support Arms
1.1	Manufacturer			CESAB
1.2	Model			S212S
1.3	Drive			Electric
1.4	Operator type			Pedestrian
1.5	Load capacity/rated load	Q	[kg]	1200
1.6	Load centre	c	[mm]	600
1.8	Load distance, centre of support arm wheel to face of forks	x	[mm]	561
1.9	Wheelbase	y	[mm]	1203
WEIGHT				
2.1	Service weight including battery		[kg]	1009
2.2	Axle load, with load, drive/castor/support arm wheel		[kg]	635/1580
2.3	Axle load, without load, drive/castor/support arm wheel		[kg]	675/340
WHEELS				
3.1	Drive/castor/fork wheel			Friction/Vulkollan/Vulkollan *)
3.2	Wheel size, front		[mm]	Ø230x70
3.3	Wheel size, rear		[mm]	Ø100x73
3.5	Wheels, number front/rear (x=driven wheels)			1x/2
3.7	Track width, rear	b <sub>11</sub>	[mm]	1000
DIMENSIONS				
4.2	Height, mast lowered	h <sub>1</sub>	[mm]	1832 *)
4.3	Free lift	h <sub>2</sub>	[mm]	1380 *)
4.4	Lift	h <sub>3</sub>	[mm]	2655 *)
	Lift height	h <sub>23</sub>	[mm]	2655 *)
4.5	Height, mast extended	h <sub>4</sub>	[mm]	3226 *)
4.8	Stand height (optional platform)	h <sub>7</sub>	[mm]	150
4.9	Height of tiller in drive position, min./max.	h <sub>14</sub>	[mm]	865/1235
4.10	Height of support arm	h <sub>10</sub>	[mm]	100
4.15	Height, fork lowered	h <sub>13</sub>	[mm]	50
4.19	Overall length	l <sub>1</sub>	[mm]	1942
4.20	Length to face of forks	l <sub>2</sub>	[mm]	792
4.21	Overall width	b <sub>1</sub> /b <sub>2</sub>	[mm]	770/1100 *)
4.22	Fork dimensions	s/e/l	[mm]	40/100/1150 *)
4.24	Fork-carriage width	b <sub>3</sub>	[mm]	840
4.25	Width over forks	b <sub>5</sub>	[mm]	252—800
4.26	Distance between support arms	b <sub>4</sub>	[mm]	900 *)
4.31	Ground clearance, with load, below mast	m <sub>1</sub>	[mm]	32
4.32	Ground clearance, centre of wheelbase	m <sub>2</sub>	[mm]	40
4.33	Aisle width for pallets 1000x1200 crossways	A <sub>st</sub>	[mm]	2297
4.34	Aisle width for pallets 800x1200 lengthways	A <sub>st</sub>	[mm]	2307
4.35	Turning radius	W <sub>a</sub>	[mm]	1353
PERFORMANCE DATA				
5.1	Travel speed, with/without load		[km/h]	6/6
5.2	Lift speed, with/without load		[m/s]	0.11/0.21
5.3	Lowering speed, with/without load		[m/s]	0.33/0.24
5.8	Max. gradeability, with/without load		[%]	8/10 <sup>1)</sup>
5.10	Service brake			Electromagnetic
ELECTRIC MOTOR				
6.1	Drive motor rating S2 60 min		[kW]	1.0
6.2	Lift motor rating at S3 15%		[kW]	2.2 <sup>2)</sup>
6.4	Battery voltage/nominal capacity K <sub>S</sub>		[V/Ah]	24/225 <sup>3)</sup>
6.5	Battery weight		[kg]	219 <sup>3)</sup>
OTHERS				
8.1	Type of drive control			CESAB Drive Control

<sup>1)</sup> Measured according to company standard

<sup>2)</sup> S3 6%

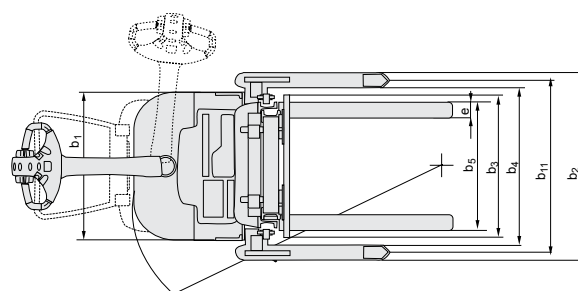
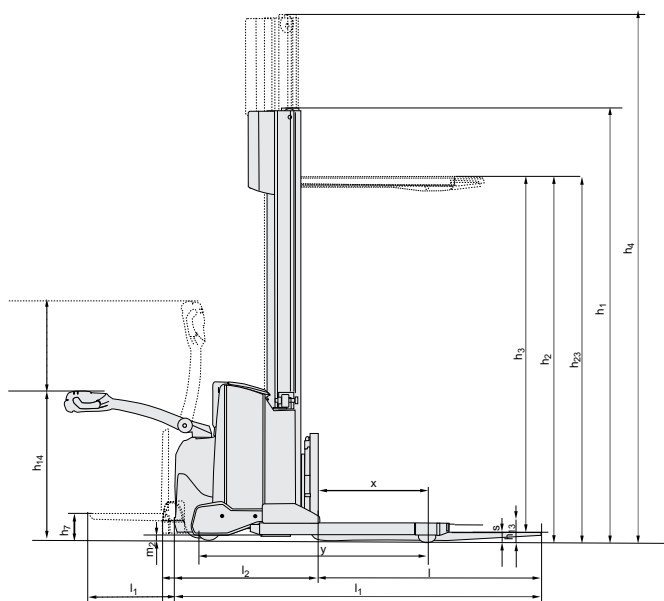
<sup>3)</sup> Further alternatives are available and will produce other values.

Data is based on standard configurations: medium battery compartment, h<sub>23</sub> = 2655 mm Duplex Freelift mast (S212S).  
Truck performance and dimensions are nominal and subject to tolerances.  
Products and specifications are subject to change without notice.





## CESAB S212S Dimensional Drawings



## Battery compartments

				S212S			
Battery change				Lift out		Lift out	
Battery compartment				Medium		Large	
1.9	Wheelbase	y	[mm]	1203		1253	
4.19	Overall length	without platform	$l_1$	1942		1992	
		platform up/down	$l_1$	2027/2417		2077/2467	
4.20	Length to face of forks	without platform	$l_2$	792		842	
		platform up/down	$l_2$	877/1267		927/1317	
4.33	Aisle width for pallets 1000x1200 crossways	without platform	$A_{st}$	2297		2347	
		platform up/down	$A_{st}$	2382/2782		2432/2832	
4.34	Aisle width for pallets 800x1200 lengthways	without platform	$A_{st}$	2307		2357	
		platform up/down	$A_{st}$	2392/2792		2442/2842	
4.35	Turning radius	without platform	$W_a$	1353		1403	
		platform up/down	$W_a$	1438/1838		1488/1888	
6.4	Battery voltage, nominal capacity $K_s$		[V/Ah]	24/225		24/300	
6.5	Battery weight, min.-max.	kg		189-250		230-280	

## Mast Specifications

S212S	Simplex	Duplex Tele		Duplex Tele Open View				Duplex Freelift				Triplex Freelift						
$h_{23}$ Lift height ( $h_{13}+h_3$ )	[mm]	1355	1655	2655	2855	3255	3655	4105	2655	2855	3255	3655	4105	3255	3655	4105	4455	4755
$h_3$ Lift	[mm]	1305	1605	2605	2805	3205	3605	4005	2605	2805	3205	3605	4005	3205	3605	4005	4405	4705
$h_1$ Height, mast lowered	[mm]	1822	2122	1837	1937	2137	2337	2562	1832	1932	2132	2332	2557	1832	1932	2132	2092	2192
$h_2$ Free lift, ground to top of forks	[mm]	1355	1655	126	126	126	126	126	126	126	126	126	126	1380	1480	1680	1880	2104
$h_4$ Height, mast extended	[mm]	1901	2201	3205	3405	3805	4205	4655	3205	3405	3805	4205	4655	3226	3426	3826	4226	4676

## CESAB S215 - S216 - 220 Truck Specifications

CHARACTERISTICS						
1.1	Manufacturer		CESAB	CESAB	CESAB	
1.2	Model		S215	S216	S220	
1.3	Drive		Electric	Electric	Electric	
1.4	Operator type		Pedestrian	Pedestrian	Pedestrian	
1.5	Load capacity/rated load	Q	[kg]	1450	1600	2000
1.6	Load centre	c	[mm]	600	600	600
1.8	Load distance, centre of support arm wheel to face of forks	x	[mm]	649	649	638
1.9	Wheelbase	y	[mm]	1344	1344	1344
WEIGHT						
2.1	Service weight including battery		[kg]	1439	1439	1660
2.2	Axle load, with load, drive/castor/support arm wheel		[kg]	510/481/1898	580/416/2043	600/521/2539
2.3	Axle load, without load, drive/castor/support arm wheel		[kg]	360/578/501	380/558/501	360/704/596
WHEELS						
3.1	Drive/castor/fork wheel			Friction/Vulkollan®/Vulkollan®		
3.2	Wheel size, front		[mm]	Ø 230	Ø 230	Ø 230
3.3	Wheel size, rear		[mm]	Ø 85	Ø 85	Ø 85
3.4	Additional wheels (dimensions)		[mm]	Ø 125	Ø 125	Ø 125
3.5	Wheels, number front/rear (x=driven wheels)			1x + 2 / 4	1x + 2 / 4	1x + 2 / 4
3.6	Track width, front	b <sub>10</sub>	[mm]	585	585	585
3.7	Track width, rear	b <sub>11</sub>	[mm]	370	370	390
DIMENSIONS						
4.2	Height, mast lowered	h <sub>1</sub>	[mm]	1946	1946	1946
4.3	Free lift	h <sub>2</sub>	[mm]	1666	1666	1566
4.4	Lift	h <sub>3</sub>	[mm]	4060	4060	3960
	Lift height	h <sub>23</sub>	[mm]	4150	4150	4050
4.5	Height, mast extended	h <sub>4</sub>	[mm]	5056	5056	5056
4.9	Height of tiller in drive position, min./max.	h <sub>14</sub>	[mm]	869/1294	869/1294	869/1294
4.15	Height, fork lowered	h <sub>13</sub>	[mm]	90	90	90
4.19	Overall length	l <sub>1</sub>	[mm]	1999	1999	2010
4.20	Length to face of forks	l <sub>2</sub>	[mm]	849	849	860
4.21	Overall width	b <sub>1</sub>	[mm]	790/—	790/—	790/—
4.22	Fork dimensions	s/e/l	[mm]	70/180/1150	70/180/1150	70/185/1150
4.25	Width over forks	b <sub>5</sub>	[mm]	570	570	575
4.32	Ground clearance, centre of wheelbase	m <sub>2</sub>	[mm]	27,5	27,5	27,5
4.33	Aisle width for pallets 1000x1200 crossways	A <sub>st</sub>	[mm]	2486	2486	2493
4.34	Aisle width for pallets 800x1200 lengthways	A <sub>st</sub>	[mm]	2385	2385	2394
4.35	Turning radius	W <sub>a</sub>	[mm]	1504	1504	1504
PERFORMANCE DATA						
5.1	Travel speed, with/without load		[km/h]	6,0/6,0	6,0/6,0	6,0/6,0
5.2	Lift speed, with/without load		[m/s]	0,17/0,33	0,17/0,33	0,13/0,24
5.3	Lowering speed, with/without load		[m/s]	0,45/0,45	0,45/0,45	0,45/0,45
5.8	Max. gradeability, with/without load <sup>1)</sup>		[%]	8/12	8/12	8/12
5.9	Acceleration time (over 10 m)		[s]	7,1	7,2	7,4
5.10	Service brake			Electromagnetic	Electromagnetic	Electromagnetic
ELECTRIC MOTOR						
6.1	Drive motor rating S2 60 min		[kW]	1,8	1,8	1,8
6.2	Lift motor rating at S3 15%		[kW]	3	3	3
6.4	Battery voltage/nominal capacity K <sub>5</sub>		[V/Ah]	24/300	24/300	24/300
6.5	Battery weight		[kg]	195-270	195-270	195-270
6.6	Energy consumption acc to VDI cycle		[kW/h/h]	1,078	1,078	1,078
OTHERS						
8.1	Type of drive control			CESAB Drive Control	CESAB Drive Control	CESAB Drive Control
8.4	Sound level at the driver's ear according to EN 12 053		[dB (A)]	66	66	67

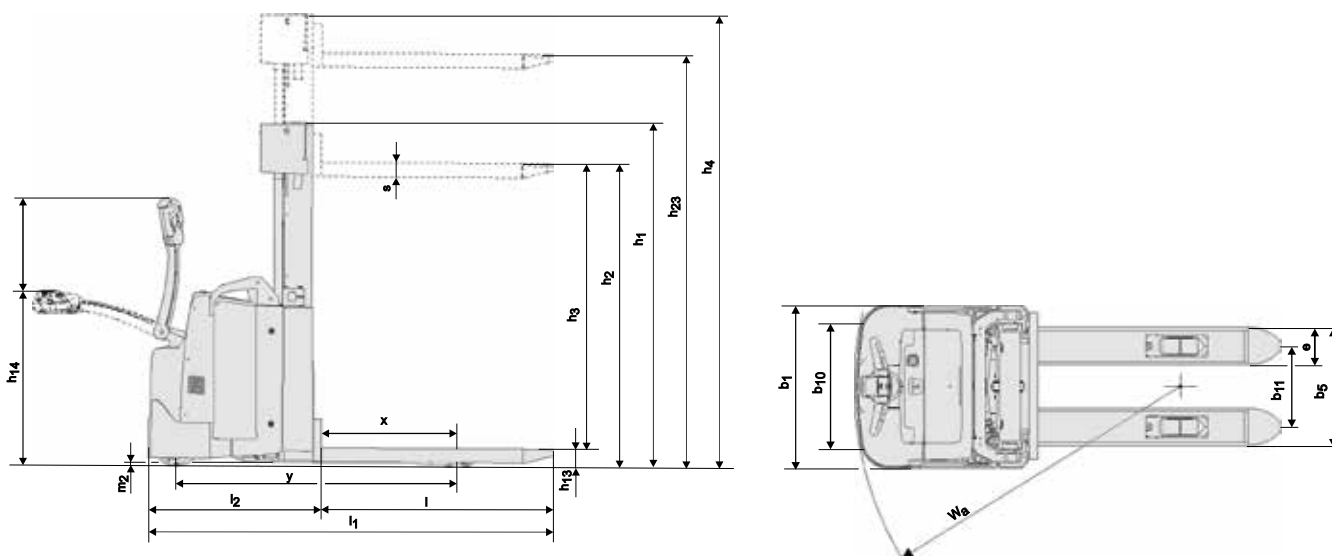
<sup>1)</sup> Measured according to company standard

Data is based on standard configurations.

Truck performance and dimensions are nominal and subject to tolerances. Products and specifications are subject to change without notice.



## CESAB S215 - S216 - S220 Dimensional Drawings



### Battery compartments

		S215				S216				S220			
		Lift out		Sideways		Lift out		Sideways		Lift out		Sideways	
Battery compartment		S	L	S	L	S	L	S	L	S	L	S	L
1.9 Wheelbase	y [mm]	1344	1441	1344	1441	1344	1441	1344	1441	1344	1441	1344	1441
4.19 Overall length	l <sub>1</sub> [mm]	1999	2096	1999	2096	1999	2096	1999	2096	2010	2107	2010	2107
4.20 Length to face of forks	l <sub>2</sub> [mm]	849	946	849	946	849	946	849	946	860	957	860	957
4.33 Aisle width for pallets 1000x1200 crossways	A <sub>st</sub> [mm]	2486	2582	2486	2582	2486	2582	2486	2582	2493	2589	2493	2589
4.34 Aisle width for pallets 800x1200 lengthways	A <sub>st</sub> [mm]	2385	2481	2385	2481	2385	2481	2385	2481	2394	2490	2394	2490
4.35 Turning radius	W <sub>g</sub> [mm]	1504	1600	1504	1600	1504	1600	1504	1600	1504	1600	1504	1600
6.4 Battery voltage, nominal capacity K <sub>s</sub>	[V/Ah]	24/300	24/500	24/300	24/500	24/300	24/500	24/300	24/500	24/300	24/500	24/300	24/500
6.5 Battery weight, min.—max.	[kg]	195-270	345-403	195-270	345-403	195-270	345-403	195-270	345-403	195-270	345-403	195-270	345-403

### Mast Specifications

S215			Duplex Tele Open View				Duplex Freelifft				Triplex Freelifft											
h <sub>23</sub>	Lift height (h <sub>13</sub> +h <sub>3</sub> )	[mm]	2350	2800	3300	3700	4150	1950	2350	2500	2800	3300	3700	4150	3300	3700	3950	4150	4500	4800	5400	6000
h <sub>3</sub>	Lift	[mm]	2260	2710	3210	3610	4060	1860	2260	2410	2710	3210	3610	4060	3210	3610	3860	4060	4410	4710	5310	—
h <sub>1</sub>	Height, mast lowered	[mm]	1652	1877	2127	2327	2552	1536	1652	1727	1877	2127	2327	2552	1662	1796	1879	1946	2062	2162	2362	—
h <sub>2</sub>	Free lift, ground to top of forks	[mm]	—	—	—	—	1056	1354	1430	1580	1830	2030	2254	1382	1516	1598	1666	1782	1882	2082	—	
h <sub>4</sub>	Height, mast extended	[mm]	2892	3342	3842	4242	4692	2491	2891	3041	3341	3841	4241	4691	3816	4218	4467	4668	5016	5316	5916	—

S216			Duplex Tele Open View				Duplex Freelifft				Triplex Freelifft											
h <sub>23</sub>	Lift height (h <sub>13</sub> +h <sub>3</sub> )	[mm]	2350	2800	3300	3700	4150	1950	2350	2500	2800	3300	3700	4150	3300	3700	3950	4150	4500	4800	5400	6000
h <sub>3</sub>	Lift	[mm]	2260	2710	3210	3610	4060	1860	2260	2410	2710	3210	3610	4060	3210	3610	3860	4060	4410	4710	5310	5910
h <sub>1</sub>	Height, mast lowered	[mm]	1737	1962	2212	2412	2637	1536	1736	1811	1961	2211	2411	2636	1662	1796	1879	1946	2062	2162	2362	2562
h <sub>2</sub>	Free lift, ground to top of forks	[mm]	—	—	—	—	1056	1256	1332	1482	1732	1932	2156	1382	1516	1598	1666	1782	1882	2082	2284	
h <sub>4</sub>	Height, mast extended	[mm]	2892	3342	3842	4242	4692	2491	2891	3041	3341	3841	4241	4691	3816	4218	4467	4668	5016	5316	5916	6520

S220			Duplex Tele Open View				Duplex Freelifft				Triplex Freelifft						
h <sub>23</sub>	Lift height (h <sub>13</sub> +h <sub>3</sub> )	[mm]	2150	2600	3100	3500	3950	2150	2300	2600	3100	3500	3950	3200	3600	3850	4050
h <sub>3</sub>	Lift	[mm]	2060	2510	3010	3410	3860	2060	2210	2510	3010	3410	3860	3110	3510	3760	3960
h <sub>1</sub>	Height, mast lowered	[mm]	1737	1962	2212	2412	2637	1737	1812	1962	2212	2412	2637	1662	1796	1879	1946
h <sub>2</sub>	Free lift, ground to top of forks	[mm]	—	—	—	—	—	1344	1420	1570	1820	2020	2244	1282	1416	1498	1566
h <sub>4</sub>	Height, mast extended	[mm]	2792	3242	3742	4142	4592	2792	2942	3242	3742	4142	4592	3816	4218	4467	4668

## CESAB S215L - S216L - S220L Truck Specifications

CHARACTERISTICS			Elevating Support Arms	Elevating Support Arms	Elevating Support Arms
1.1	Manufacturer		CESAB	CESAB	CESAB
1.2	Model		S215L	S216L	S220L
1.3	Drive		Electric	Electric	Electric
1.4	Operator type		Pedestrian	Pedestrian	Pedestrian
1.5	Load capacity/rated load	Q [kg]	1450	1600	2000
	Support arm capacity	Q [kg]	2000	2000	2000
1.6	Load centre	c [mm]	600	600	600
1.8	Load distance, centre of support arm wheel to face of forks				
	raised support arms	x [mm]	661	661	644
	lowered support arms	x [mm]	692	692	675
1.9	Wheelbase, raised support arms	y [mm]	1397	1397	1397
	Wheelbase, lowered support arms	y [mm]	1428	1428	1428
WEIGHT					
2.1	Service weight including battery	[kg]	1439	1439	1660
2.2	Axle load, with load, drive/castor/support arm wheel	[kg]	540/495/1854	560/484/1995	670/512/2478
2.3	Axle load, without load, drive/castor/support arm wheel	[kg]	400/545/494	400/545/494	400/674/586
WHEELS					
3.1	Drive/castor/fork wheel		Friction/Vulkollan®/Vulkollan®		
3.2	Wheel size, front	[mm]	Ø 230	Ø 230	Ø 230
3.3	Wheel size, rear	[mm]	Ø 85	Ø 85	Ø 85
3.4	Additional wheels (dimensions)	[mm]	Ø 125	Ø 125	Ø 125
3.5	Wheels, number front/rear (x=driven wheels)		1x + 2 / 4	1x + 2 / 4	1x + 2 / 4
3.6	Track width, front	b <sub>10</sub> [mm]	585	585	585
3.7	Track width, rear	b <sub>11</sub> [mm]	370	370	390
DIMENSIONS					
4.2	Height, mast lowered	h <sub>1</sub> [mm]	1946	1946	1946
4.3	Free lift	h <sub>2</sub> [mm]	1666	1666	1566
4.4	Lift	h <sub>3</sub> [mm]	4060	4060	3960
	Lift height	h <sub>23</sub> [mm]	4150	4150	4050
4.5	Height, mast extended	h <sub>4</sub> [mm]	5056	5056	5056
4.6	Initial lift	h <sub>5</sub> [mm]	120	120	120
4.9	Height of tiller in drive position, min./max.	h <sub>14</sub> [mm]	869/1294	869/1294	869/1294
4.15	Height, fork lowered	h <sub>13</sub> [mm]	90	90	90
4.19	Overall length	l <sub>1</sub> [mm]	2045	2045	2056
4.20	Length to face of forks	l <sub>2</sub> [mm]	895	895	906
4.21	Overall width	b <sub>1</sub> /b <sub>2</sub> [mm]	790/—	790/—	790/—
4.22	Fork dimensions	s/e/l [mm]	70/180/1150	70/180/1150	70/185/1150
4.25	Width over forks	b <sub>5</sub> [mm]	570	570	575
4.32	Ground clearance, centre of wheelbase	m <sub>2</sub> [mm]	19,5	19,5	19,5
4.33	Aisle width for pallets 1000x1200 crossways	A <sub>st</sub> [mm]	2448	2448	2458
4.34	Aisle width for pallets 800x1200 lengthways	A <sub>st</sub> [mm]	2340	2340	2353
4.35	Turning radius	W <sub>a</sub> [mm]	1493	1493	1590
PERFORMANCE DATA					
5.1	Travel speed, with/without load	[km/h]	6,0/6,0	6,0/6,0	6,0/6,0
5.2	Lift speed, with/without load	[m/s]	0,17/0,33	0,15/0,31	0,13/0,24
5.3	Lowering speed, with/without load	[m/s]	0,45/0,45	0,45/0,45	0,38/0,45
5.8	Max. gradeability, with/without load	[%]	7/12 <sup>1)</sup>	7/12 <sup>1)</sup>	7/12 <sup>1)</sup>
5.9	Acceleration time (over 10 m)	[s]	7,1	7,2	7,4
5.10	Service brake		Electromagnetic	Electromagnetic	Electromagnetic
ELECTRIC MOTOR					
6.1	Drive motor rating S2 60 min	[kW]	1,8	1,8	1,8
6.2	Lift motor rating at S3 15%	[kW]	3	3	3
6.4	Battery voltage/nominal capacity K <sub>s</sub>	[V/Ah]	24/300	24/300	24/300
6.5	Battery weight	[kg]	195-270	195-270	195-270
6.6	Energy consumption acc to VDI cycle	[kW/h/h]	1,078	1,078	
OTHERS					
8.1	Type of drive control		CESAB Drive Control	CESAB Drive Control	CESAB Drive Control
8.4	Sound level at the driver's ear according to EN 12 053	[dB (A)]	66	66	67

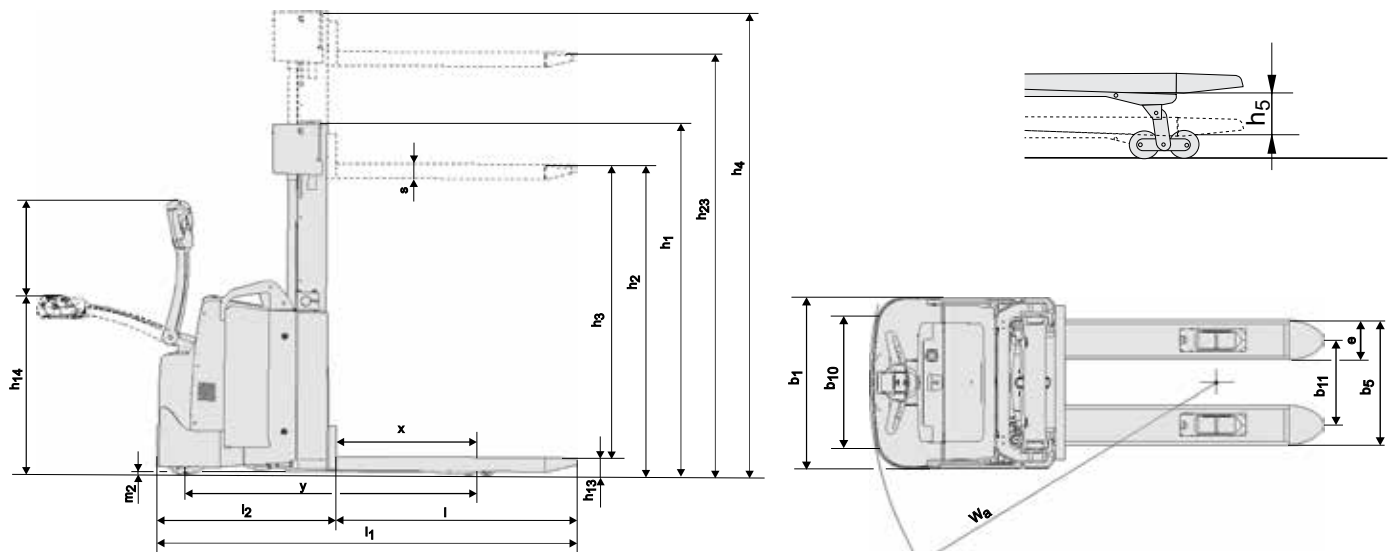
<sup>1)</sup> Measured according to company standard. 8/12 with 1600 kg on the support arms.

Data is based on standard configurations.

Truck performance and dimensions are nominal and subject to tolerances. Products and specifications are subject to change without notice.



## CESAB S215L - S216L - S220L Dimensional Drawings



### Battery compartments

		S215L				S216L				S220L			
		Lift out		Sideways		Lift out		Sideways		Lift out		Sideways	
Battery compartment		S	L	S	L	S	L	S	L	S	L	S	L
1.9 Wheelbase raised support arms	y [mm]	1397	1494	1397	1494	1397	1494	1397	1494	1397	1494	1397	1494
Wheelbase lowered support arms	y [mm]	1428	1525	1428	1525	1428	1525	1428	1525	1428	1525	1428	1525
4.19 Overall length	l <sub>1</sub> [mm]	2045	2142	2045	2142	2045	2142	2045	2142	2056	2153	2056	2153
4.20 Length to face of forks	l <sub>2</sub> [mm]	895	992	895	992	895	992	895	992	906	1003	906	1003
4.33 Aisle width for pallets 1000x1200 crossways	A <sub>st</sub> [mm]	2448	2545	2448	2545	2448	2545	2448	2545	2458	2555	2458	2555
4.34 Aisle width for pallets 800x1200 lengthways	A <sub>st</sub> [mm]	2340	2437	2340	2437	2340	2437	2340	2437	2353	2450	2353	2450
4.35 Turning radius	W <sub>a</sub> [mm]	1493	1590	1493	1590	1493	1590	1493	1590	1493	1590	1493	1590
6.4 Battery voltage, nominal capacity K <sub>s</sub>	[V/Ah]	24/300	24/500	24/300	24/500	24/300	24/500	24/300	24/500	24/300	24/500	24/300	24/500
6.5 Battery weight, min.—max.	[kg]	195-270	345-403	195-270	345-403	195-270	345-403	195-270	345-403	195-270	345-403	195-270	345-403

### Mast Specifications

S215L			Duplex Tele Open View					Duplex Freelifft					Triplex Freelifft									
h <sub>23</sub>	Lift height (h <sub>13</sub> +h <sub>3</sub> )	[mm]	2350	2800	3300	3700	4150	1950	2350	2500	2800	3300	3700	4150	3300	3700	3950	4150	4500	4800	5400	6000
h <sub>3</sub>	Lift	[mm]	2260	2710	3210	3610	4060	1860	2260	2410	2710	3210	3610	4060	3210	3610	3860	4060	4410	4710	5310	—
h <sub>1</sub>	Height, mast lowered	[mm]	1652	1877	2127	2327	2552	1536	1652	1727	1877	2127	2327	2552	1662	1796	1879	1946	2062	2162	2362	—
h <sub>2</sub>	Free lift, ground to top of forks	[mm]	—	—	—	—	—	1056	1354	1430	1580	1830	2030	2254	1382	1516	1598	1666	1782	1882	2082	—
h <sub>4</sub>	Height, mast extended	[mm]	2892	3342	3842	4242	4692	2491	2891	3041	3341	3841	4241	4691	3816	4218	4467	4668	5016	5316	5916	—

S216L			Duplex Tele Open View					Duplex Freelifft					Triplex Freelifft									
h <sub>23</sub>	Lift height (h <sub>13</sub> +h <sub>3</sub> )	[mm]	2350	2800	3300	3700	4150	1950	2350	2500	2800	3300	3700	4150	3300	3700	3950	4150	4500	4800	5400	6000
h <sub>3</sub>	Lift	[mm]	2260	2710	3210	3610	4060	1860	2260	2410	2710	3210	3610	4060	3210	3610	3860	4060	4410	4710	5310	5910
h <sub>1</sub>	Height, mast lowered	[mm]	1737	1962	2212	2412	2637	1536	1736	1811	1961	2211	2411	2636	1662	1796	1879	1946	2062	2162	2362	2562
h <sub>2</sub>	Free lift, ground to top of forks	[mm]	—	—	—	—	—	1056	1256	1332	1482	1732	1932	2156	1382	1516	1598	1666	1782	1882	2082	2284
h <sub>4</sub>	Height, mast extended	[mm]	2892	3342	3842	4242	4692	2491	2891	3041	3341	3841	4241	4691	3816	4218	4467	4668	5016	5316	5916	6520

S220L			Duplex Tele Open View					Duplex Freelifft					Triplex Freelifft				
h <sub>23</sub>	Lift height (h <sub>13</sub> +h <sub>3</sub> )	[mm]	2150	2600	3100	3500	3950	2150	2300	2600	3100	3500	3950	3200	3600	3850	4050
h <sub>3</sub>	Lift	[mm]	2060	2510	3010	3410	3860	2060	2210	2510	3010	3410	3860	3110	3510	3760	3960
h <sub>1</sub>	Height, mast lowered	[mm]	1737	1962	2212	2412	2637	1737	1812	1962	2212	2412	2637	1662	1796	1879	1946
h <sub>2</sub>	Free lift, ground to top of forks	[mm]	—	—	—	—	—	1344	1420	1570	1820	2020	2244	1282	1416	1498	1566
h <sub>4</sub>	Height, mast extended	[mm]	2792	3242	3742	4142	4592	2792	2942	3242	3742	4142	4592	3816	4218	4467	4668

## CESAB S214S Truck Specifications

CHARACTERISTICS			Straddle Support Arms
1.1	Manufacturer		CESAB
1.2	Model		S214S
1.3	Drive		Electric
1.4	Operator type		Pedestrian
1.5	Load capacity/rated load	Q [kg]	1400
1.6	Load centre	c [mm]	600
1.8	Load distance, centre of support arm wheel to face of forks	x [mm]	758
1.9	Wheelbase	y [mm]	1443
WEIGHT			
2.1	Service weight including battery	[kg]	1509
2.2	Axle load, with load, drive/castor/support arm wheel	[kg]	510/625/1774
2.3	Axle load, without load, drive/castor/support arm wheel	[kg]	360/630/519
WHEELS			
3.1	Drive/support arm wheel		Friction/Vulkollan®/Vulkollan®
3.2	Wheel size, front	[mm]	Ø 230
3.3	Wheel size, rear	[mm]	Ø 140/ Ø 85
3.4	Additional wheel size	[mm]	Ø 125
3.5	Wheels, number front/rear (x=driven wheels)		1x + 2 / 2 or 4
3.6	Track width, front	[mm]	585
3.7	Track width, rear	b <sub>11</sub> [mm]	985
DIMENSIONS			
4.2	Height, mast lowered	h <sub>1</sub> [mm]	1946
4.3	Free lift	h <sub>2</sub> [mm]	1666
4.4	Lift	h <sub>3</sub> [mm]	4060
	Lift height	h <sub>23</sub> [mm]	4100
4.5	Height, mast extended	h <sub>4</sub> [mm]	5056
4.9	Height of tiller in drive position, min./max.	h <sub>14</sub> [mm]	869/1294
4.10	Height of support arm	h <sub>10</sub> [mm]	140 or 93
4.15	Height, fork lowered	h <sub>13</sub> [mm]	50
4.19	Overall length	l <sub>1</sub> [mm]	2041
4.20	Length to face of forks	l <sub>2</sub> [mm]	891
4.21	Overall width	b <sub>1</sub> /b <sub>2</sub> [mm]	790/1172
4.22	Fork dimensions	s/e/l [mm]	40/100/1150
4.25	Width over forks	b <sub>5</sub> [mm]	250-890
4.26	Distance between support arms	b <sub>4</sub> [mm]	900
4.32	Ground clearance, centre of wheelbase	m <sub>2</sub> [mm]	40/32,5
4.33	Aisle width for pallets 1000x1200 crossways	A <sub>st</sub> [mm]	2517
4.34	Aisle width for pallets 800x1200 lengthways	A <sub>st</sub> [mm]	2396
4.35	Turning radius	W <sub>a</sub> [mm]	1600
PERFORMANCE DATA			
5.1	Travel speed, with/without load	[km/h]	6,0/6,0
5.2	Lift speed, with/without load	[m/s]	0,17/0,33
5.3	Lowering speed, with/without load	[m/s]	0,45/0,45
5.8	Max. gradeability, with/without load <sup>1)</sup>	[%]	8/12
5.9	Acceleration time (over 10 m)	[s]	7,1
5.10	Service brake		Electromagnetic
ELECTRIC MOTOR			
6.1	Drive motor rating S2 60 min	[kW]	1,8
6.2	Lift motor rating at S3 15%	[kW]	3
6.4	Battery voltage/nominal capacity K <sub>s</sub>	[V/Ah]	24/300
6.5	Battery weight	[kg]	195-270
6.6	Energy consumption acc to VDI cycle	[kW/h/h]	1,078
OTHERS			
8.1	Type of drive control		CESAB Drive Control
8.4	Sound level at the driver's ear according to EN 12 053	[dB (A)]	66

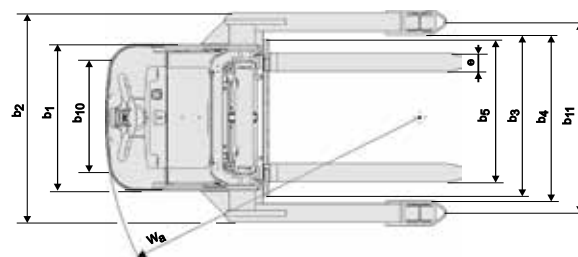
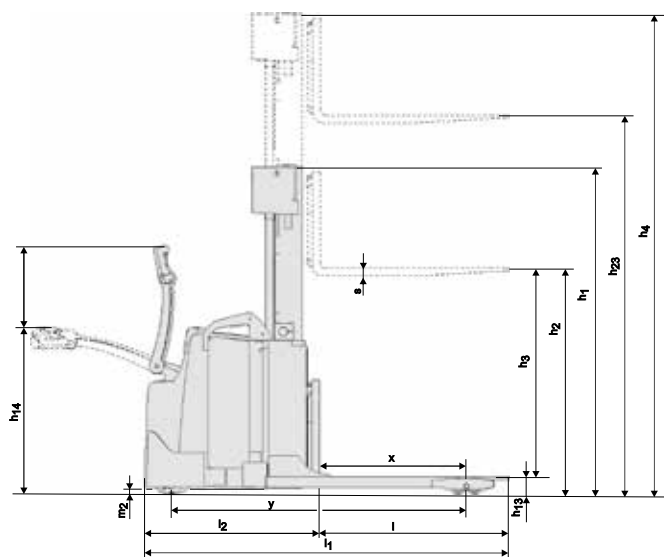
<sup>1)</sup> Measured according to company standard

Data is based on standard configurations.

Truck performance and dimensions are nominal and subject to tolerances. Products and specifications are subject to change without notice.



## CESAB S214S Dimensional Drawings



### Battery compartments

			S214S	
			LIFT OUT	
Battery compartment			S	L
1.9	Wheelbase	y [mm]	1443	1540
4.19	Overall length	l <sub>1</sub> [mm]	2041	2138
4.20	Length to face of forks	l <sub>2</sub> [mm]	891	988
4.33	Aisle width for pallets 1000x1200 crossways	A <sub>st</sub> [mm]	2517	2615
4.34	Aisle width for pallets 800x1200 lengthways	A <sub>st</sub> [mm]	2396	2494
4.35	Turning radius	W <sub>a</sub> [mm]	1600	1698
6.4	Battery voltage, nominal capacity K <sub>s</sub>	[V/Ah]	24/300	24/500
6.5	Battery weight, min.—max.	kg	195-270	345-403

### Mast Specifications

S214S			Duplex Tele Open View					Duplex Freelift					Triplex Freelift						
h <sub>23</sub>	Lift height (h <sub>13</sub> +h <sub>3</sub> )	[mm]	2300	2750	3250	3650	4100	2300	2450	2750	3250	3650	4100	3650	3900	4100	4450	4750	5350
h <sub>3</sub>	Lift	[mm]	2260	2710	3210	3610	4060	2260	2410	2710	3210	3610	4060	3610	3860	4060	4410	4710	5310
h <sub>1</sub>	Height, mast lowered	[mm]	1652	1877	2127	2327	2552	1652	1727	1877	2127	2327	2552	1796	1879	1946	2062	2162	2362
h <sub>2</sub>	Free lift, ground to top of forks	[mm]	—	—	—	—	—	1354	1430	1580	1830	2030	2254	1516	1598	1666	1782	1882	2082
h <sub>4</sub>	Height, mast extended	[mm]	2892	3342	3842	4242	4692	2891	3041	3341	3841	4241	4691	4218	4467	4668	5016	5316	5916

The data in this specification sheet was determined based on our standard testing conditions. Operating performance may vary depending on the actual specification and condition of the truck as well as the condition of the operating area. Availability and specifications are determined regionally and are subject to change without notice. Please consult your authorised CESAB dealership for further details. SPEC\_S200\_EN\_2015 / P&B S200 V22 – Copyright CESAB Material Handling Europe.

